

Bearing Number	A	B	C	D	E	Bore	Load Rating
FC-1250-5	1.248	29/64	1/4	45/64	1-3/8	0.319/0.315	198#
FC-1250-5H	1.248	29/64	1/4	45/64	1-3/8	0.322/0.317 Hex	198#
FC-1250-7H	1.248	29/64	1/4	45/64	1-3/8	0.451/0.450 Hex	198#

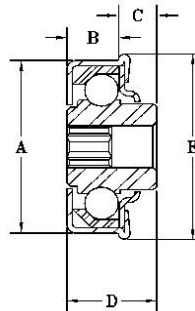
A: Dimension Tolerance = +0.010/-0.000

FEATURES

The bearings above have 12- 7/32" Diameter balls.

These bearings may be ordered with light oil or grease packed lubricant.

T added to the end of the part number designates a nylatron seal added to the front of the bearing.



Bearing Number	A	B	C	D	E	Bore	Load Rating
MFC-1500-7H	1.500	7/16	5/16	3/4	1-5/8	0.451/0.450 Hex	248#

A: Dimension Tolerance = +0.010/-0.000

FEATURES

The bearing above has 11- 9/32" Diameter balls.

This bearing may be ordered with light oil or grease packed lubricant.