

Bearing Number	A	B	C	D	E	Bore	Load Rating
LF-1775-7H	1.775	23/64	5/16	43/64	2-3/4	0.451/0.450 Hex	135#

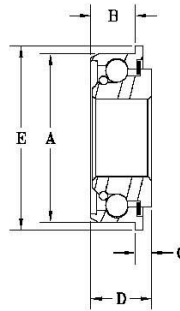
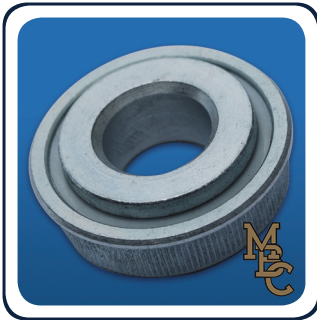
A Dimension tolerance = +0.010/-0.000.

FEATURES

The bearing above has 11- 1/4" Diameter balls.

This bearing may be ordered with light oil or grease packed lubricant.

T added to the end of the part number designates a nylatron seal added to the front of the bearing.



Bearing Number	A	B	C	D	E	Bore	Load Rating
WF-1375-7H	1.380	3/8	1/8	1/2	1-1/2	7/16 Hex	196#
WF-1375-8	1.380	3/8	1/8	1/2	1-1/2	1/2	196#
WF-1375-10	1.380	3/8	1/8	1/2	1-1/2	5/8	196#
WF-1375-12	1.380	3/8	1/8	1/2	1-1/2	3/4	196#

A and B Dimension tolerance = +0.005/-0.005

FEATURES

The bearings above have 18- 3/16" Diameter balls.

These bearings come standard with a seal on the front and a metal shield on the back.