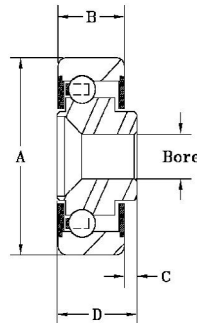
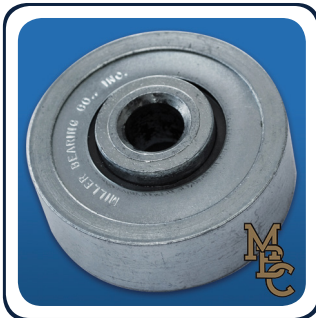


Bearing Number	A	B	C	D	E	Bore	Load Rating
R-2375-8C	1.906 Radius	25/32	17/32	1-21/64	2.365	0.508/0.504	1050#
R-2375-8CV	1.906 Radius	25/32	5/32	15/16	2.365	0.508/0.504	1050#

FEATURES

The bearings above have 9- 5/16" Diameter balls and retainer.
 These bearings may be ordered dry, with light oil or grease packed lubricant.
 These bearings come standard with an internal nylatron seal added to each side of the bearing.



Bearing Number	A	B	C	D	Bore	Load Rating
R-2250-8	2.230	25/32	17/32	1-21/64	0.508/0.504	1050#
R-2250-8V	2.230	25/32	5/32	15/16	0.508/0.504	1050#

FEATURES

The bearings above have 9- 5/16" Diameter balls and retainer.
 These bearings may be ordered dry, with light oil or grease packed lubricant.
 These bearings come standard with an internal nylatron seal added to each side of the bearing.